

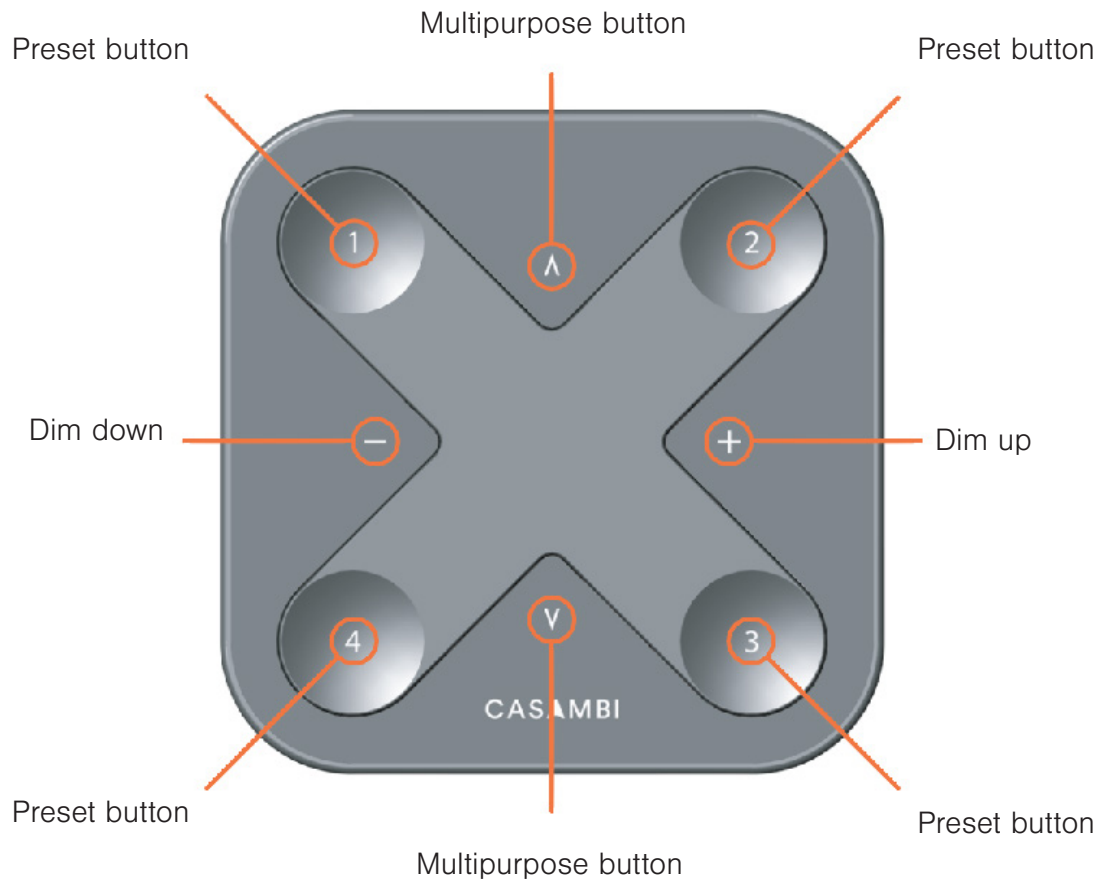
Product Description

Xpress



Xpress is a wireless user interface that brings huge flexibility to interior design as furniture can be replaced or even walls can be rebuilt without having to take wiring of switches or switch placement into account. The switch can be kept wherever the user needs it and it gives direct access to all the important Casambi lighting control functionalities.

Basic Functions



The Preset buttons of Xpress can be configured via the Casambi app. A light indicates the selected preset.

Dim up, Dim down:

- Smooth dimming of last chosen preset

Multipurpose buttons:

- Change of colour temperature in steps of 25 Kelvin
- Change of the indirect/direct ratio

Preset Buttons:

- Individual luminaire control
- Group control
- Control of all lamps
- Recall scenes
- Recall animations

Smart Functions

Dimming

Hold the Dim down or Dim up button:

- Smooth dimming of last chosen preset, cycle takes 5 seconds

Tap the Dim down button:

- Chosen preset goes to 0%

Tap the Dim up button:

- Chosen preset goes to 100%

Preset Buttons

Tap:

- The chosen preset (lamp control, group control, all lamps, scene recall or animation recall) will turn on

Tap again:

- The chosen preset (lamp control, group control, all lamps, scene recall or animation recall) will turn off

Colour Temperature

Hold the Multipurpose button:

- Changes colour temperature smoothly, cycle takes 5 seconds

Tap the upper Multipurpose button:

- Changes to the warmest colour temperature

Tap the lower Multipurpose button:

- Changes to the coldest colour temperature

Indirect/Direct Ratio*

Hold the upper Multipurpose button:

- Dims up smoothly the indirect lighting, cycle takes 5 seconds

Hold the lower Multipurpose button:

- Dims up smoothly the direct lighting, cycle takes 5 seconds

Tap the upper Multipurpose button:

- The indirect part goes to max level

Tap the lower Multipurpose button:

- The direct part goes to max level

*sum of indirect/direct in all cases 100%

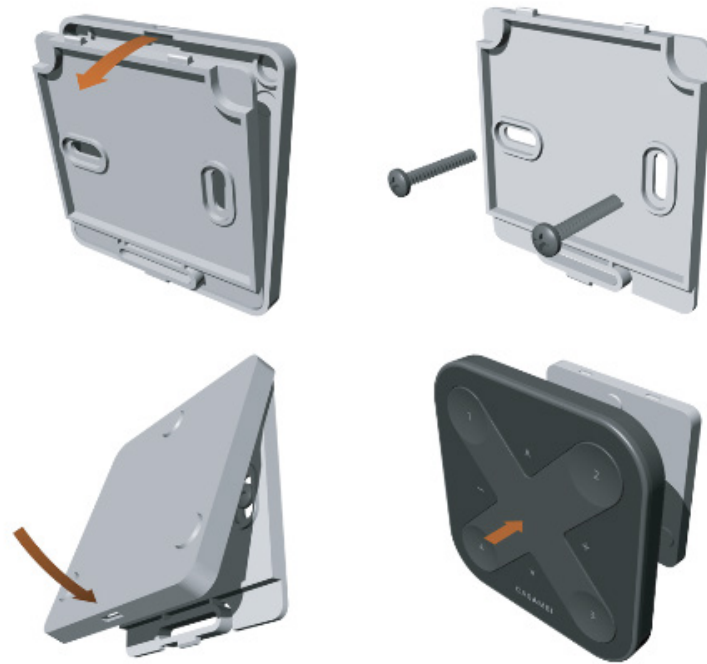
Turn Off

Press the Dim down and Dim up button for more than 0.6 seconds

- Turns all lights off in selected network

Mounting

Xpress is equipped with magnets for easy attachment to a mounting bracket. The mounting bracket as well as the battery is included.



Technical Facts

Power supply

Battery type: CR2430 Lithium Coin Cell Battery
Battery voltage: 3 VDC

Radio Transceiver

Type: Bluetooth Low Energy
Operating frequencies: 2,4...2,483 Ghz
Maximum output power: +4 dBm

Operating Conditions

Operating temperature: -20°C...+50°C
Storage temperature: -20°C...+50°C
Max. relative humidity: 0...80%, non-cond.

Mechanical Data

Dimensions: 90 x 90 x 12 mm without wall mount
90 x 90 x 17,5 mm with wall mount

Degree of protection

IP20

Colours

White and black

Range

Up to 50 meters in open air

Conformity and Standards

Radio Equipment Directive 2014/53/EU
Restriction of Hazardous Substances (RoHS) 2011/65/EC
Regulation (EC) No 1907/2006 of the European Parliament and of the Council (REACH)
ETSI EN 301 489-1 v.1.9.2
ETSI EN 301 489-17 v.2.2.1
ETSI EN 300 328 v.1.8.1